

hickory stump

PARCEL 2

tract contains 25' of error.
S 64.73
W 64.62

RAYMOND O. CALLIHAM

S 49 - 24 W
3668.67

PARCEL 3
THOMAS M. CALLIHAM
TOTAL AC. 65.22

S 38 - 02 W
5346.34

PARCELS 4 & 5

L AC. 126.29
R/W 126.22

N 38 - 36 E
2558.71

IP
177.30

629.73

N 46 - 17 W

1071.52

2 + 77.37 IP

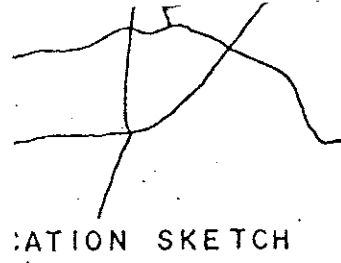
CHAMPION PAPER CO., INC.

IP OM
N 12 - 42 W
284.46

N 00 - 17 W
486.28

IP

cedar stake



S 02 - 14 W
1977.23

IP
S 60 - 09 E
. 169.89

PARCEL 2
This tract contains 25' of error.
TOTAL AC. 64.73
- ROAD R/W 64.73
NET AC. 64.62

N 28 - 44 E
1810.32

RAYMOND O. CALLIHAM

S 49 - 24 W
3668.67

PARCEL 3
THOMAS M. CALLIHAM
TOTAL AC. 65.22

S 38 - 02 W
5346.34

N 38 - 36 E
2558.71

PARCELS 4 & 5
TOTAL AC. 126.29
- ROAD R/W 126.29
NET AC. 126.22

N 51 - 00 E
3961.35

N 46 - 17 W
IP

1071.52

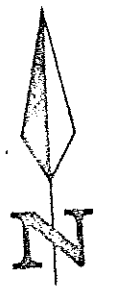
2 + 77.37 IP

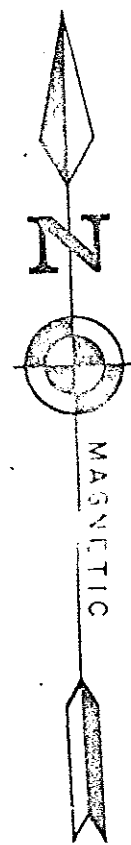
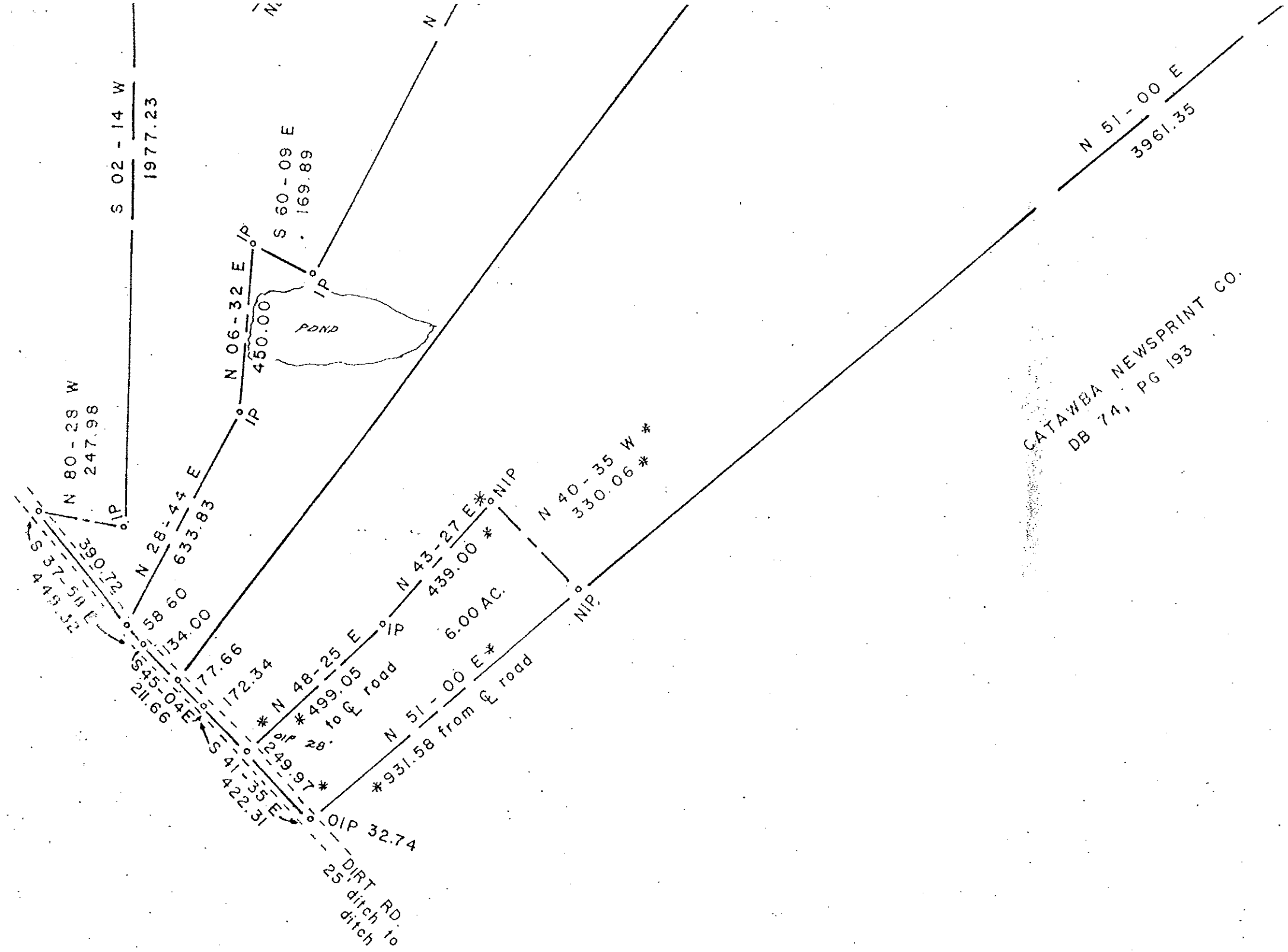
IP OM
N 12 - 42 W
284.46

cedar stake

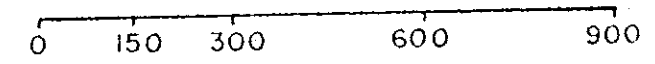
N 00 - 17 W
486.28

IP





Calliham
 201-80-092
 S.C. EDG



BEARINGS AND DISTANCES WITH * * WERE SURVEYED BY ME.
 ALL OTHER BEARINGS AND DISTANCES WERE TAKEN FROM PLATS
 BY C. ASHLEY ABLE 8-26-1976 AND 9-17-1976.

T. Darrell Newby
 T. DARRELL NEWBY SC RLS 8107

PLAT PREPARED FOR BOISE-CASCADE TIMBERLANDS CALLIHAM TRACT	
EDGEFIELD COUNTY SOUTH CAROLINA	SCALE: 1" = 30' DATE: 11/10/80
NEWBY LAND SURVEYING ROUTE 2, BOX 60 McCORMICK, S. C. 29835 PHONE: (803) 443-5331	